

Configuring Windows XP Wireless Networking - Step by Step Guide for those NOT on the Staff Desktop Service

Introduction

You will need to join the setup-wifi network. When connected to the setup-wifi, if you open a web browser you will be redirected to a page which will help configure your device.

The instructions given below are only for when this mechanism does not work.

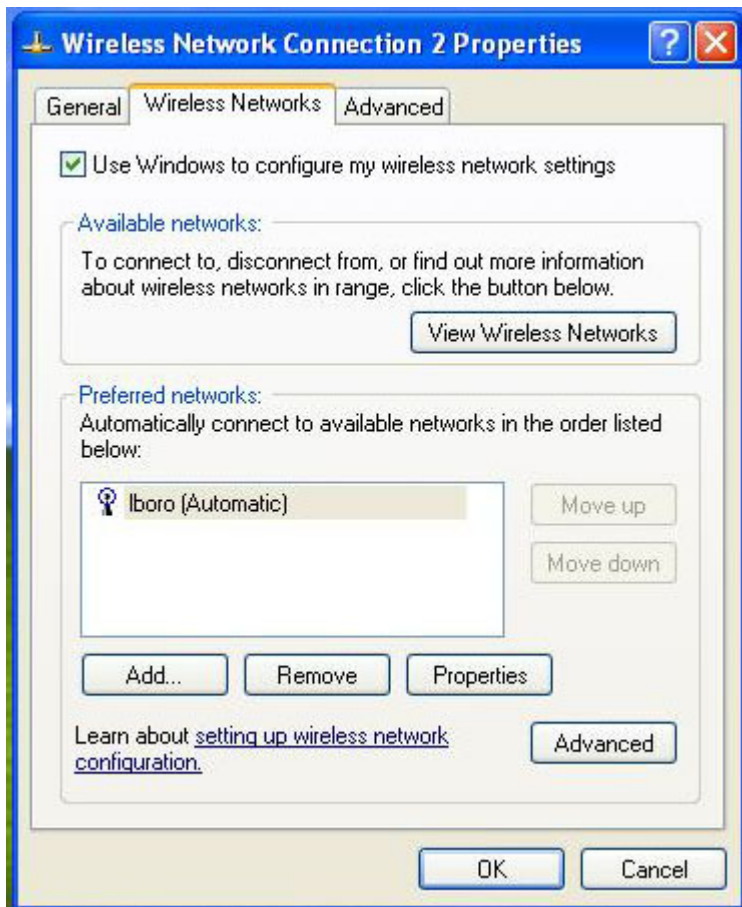
Instructions

Note that this is only necessary if you are following this Step-by-step guide to setting up wireless networking on Windows XP. We expect that Windows XP users normally will have their wireless networking configured automatically (see www.lboro.ac.uk/it/wireless/connecting.html).

1. Install the Loughborough University Certificate Authority certificates from [xp-www.lboro.ac.uk/it/wireless/certs.html](http://www.lboro.ac.uk/it/wireless/certs.html).
2. Install the Microsoft WPA2 / WPS IE patch for Windows XP as per KB article 917021 at <http://support.microsoft.com/?id=917021>.
3. Click the Start button then Settings, followed by Network Connections.
4. Right click on Wireless Network Connection and then select View Available Wireless Networks.
5. Click on Change advanced settings, as shown below:



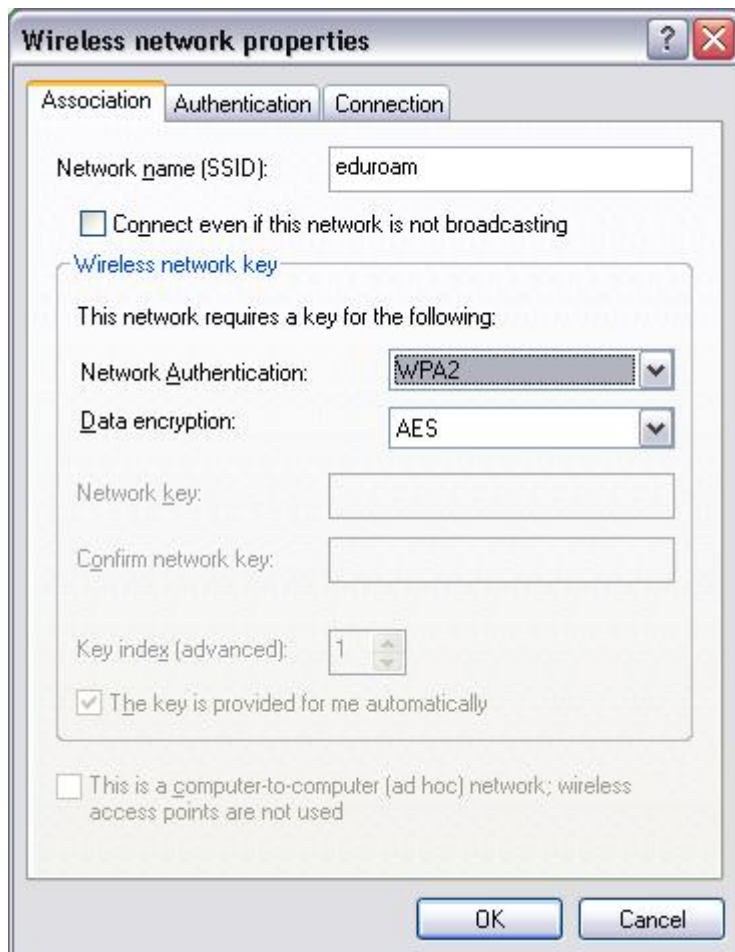
6. Select the Wireless Networks tab, as shown below:



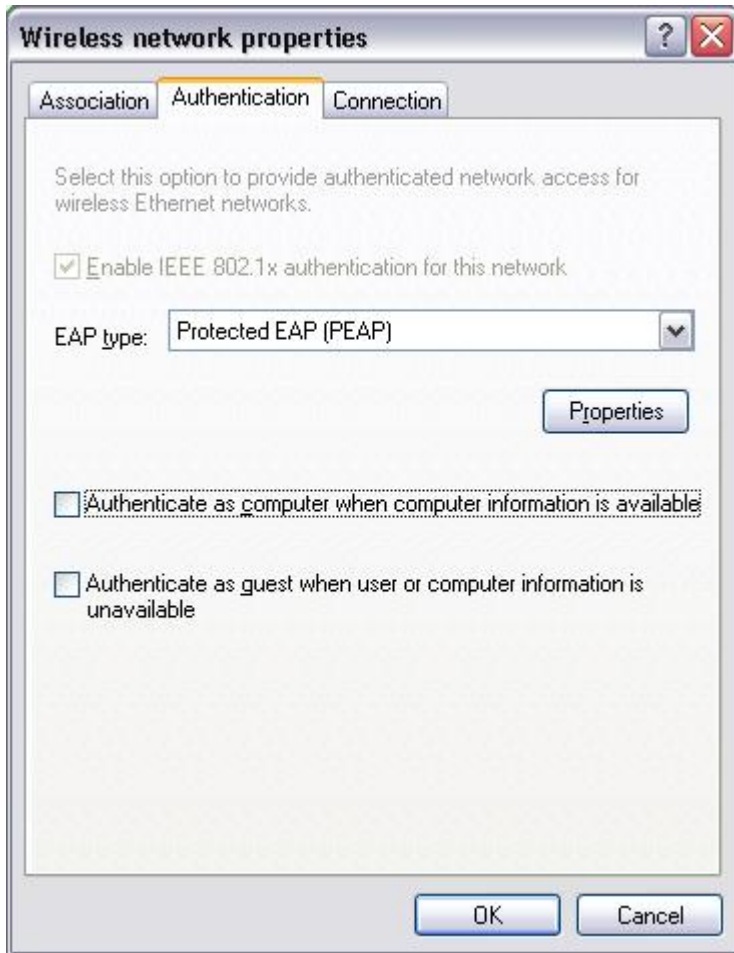
7. If eduroam doesn't appear in the Preferred networks list, press the Add button then enter eduroam (in lower case) as the SSID, and go to step 9.
8. In the Preferred networks list click on eduroam and then press the Properties button.
9. Ensure that the Association tab is selected. From the drop down menus choose values for Authentication as WPA2 and Data encryption as AES, as shown below.

We require that you use WPA2 and AES encryption.

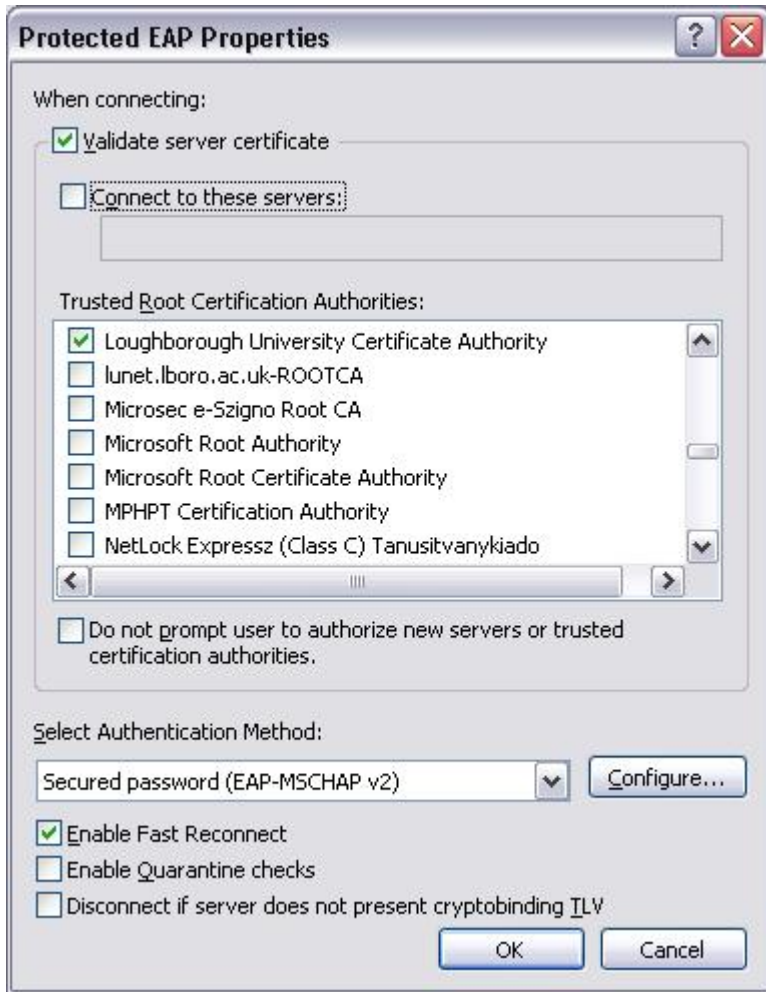
Note: If you are only presented with the options 'Open' and 'Shared', from the Network Authentication drop-down menu you will need to update your Windows drivers for your wireless network adapter. To do this you must contact the manufacturer of your laptop. Usually new drivers will be available in the support section of the manufacturer's website. Download and install the new drivers and then install the Microsoft WPA2 patch (see above), reboot and try again.



10. Click on the Authentication tab, as shown below:



11. From the EAP type: drop down menu select PEAP and un-tick the Authenticate as computer when computer information is available check box.
12. Click the Properties button.
13. Click on Validate server certificate and from the list choose Loughborough University Certificate Authority, as shown below:

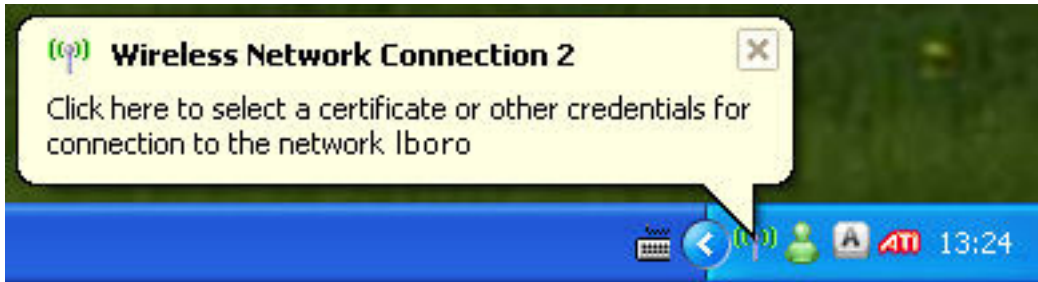


14. Select Secured password (EAP-MSCHAP v2) from the Authentication Method drop down list.
15. Tick the Enable Fast Reconnect check box.
16. Press the Configure button and make sure that Automatically use my Windows logon name and password option is not ticked, as shown below:



17. Press the OK button in each of the wireless settings windows (four times) until you are back at the desktop.

18. When your computer tries to connect to the network you will be asked for your login details, as shown below:



19. Click on the pop-up balloon and you will be presented with an authentication dialogue box.

20. In the authentication dialog, for the User name enter your University user name followed by @lboro.ac.uk and for the password enter your University password (these are the user name and password you use to read your University e-mail) then click OK. Do not enter a domain.



Windows XP - Installing Loughborough Certificates for those NOT on the Staff Desktop Service

Introduction - normal situation

You will need to join the **setup-wifi** network. When connected to the **setup-wifi**, if you open a web browser you will be redirected to a page which will help configure your device.

The instructions given below are **only** for when this mechanism does not work.

Instructions - only if the above does not work

1. Download the [certificates](#) from www.lboro.ac.uk/it/wireless/files/certs.zip and unzip them.
2. Double click on **lboro-ca.der**.
3. Click the **Install** button.
4. Click **Next**.
5. When prompted choose to **Place all certificates in the following store** and click **Browse...**
6. Tick **Show physical stores**.
7. Click the plus (+) button on **Trusted Root Certificate Authorities**.
8. Select the **Local Computer** Folder from **Trusted Root Certificate Authorities**, and click **OK**.
9. Click **Next**.
10. Click **Finish**.
11. Repeat the above steps for the RADIUS server certificate, choosing **Personal** as the certificate store.